

# SUMMIT

## FAMILY of HOMES

*from the Redman Advantage Series*

# SUMMIT

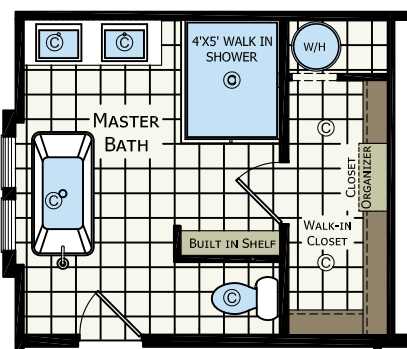
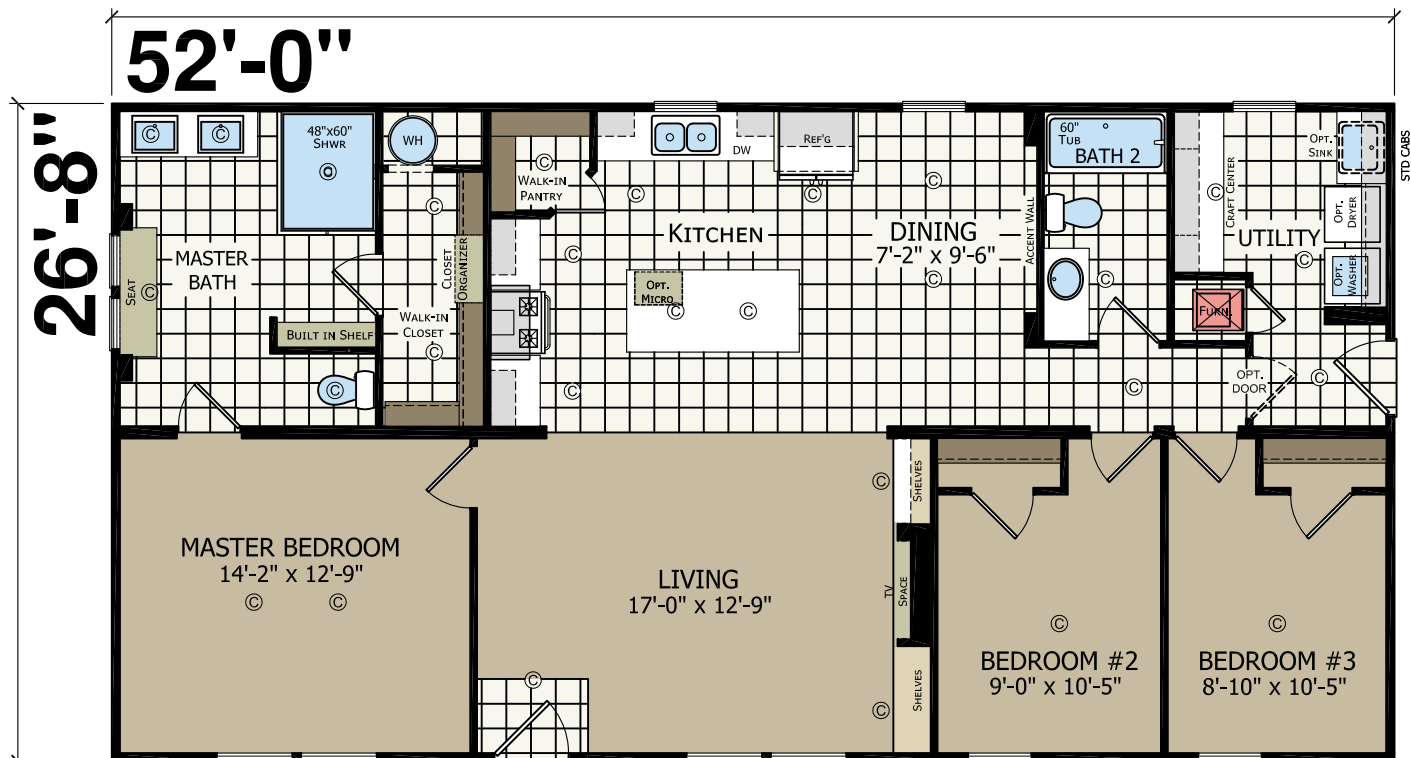
FAMILY  
of HOMES



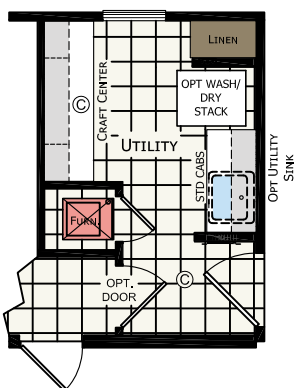


# SUMMIT 52'

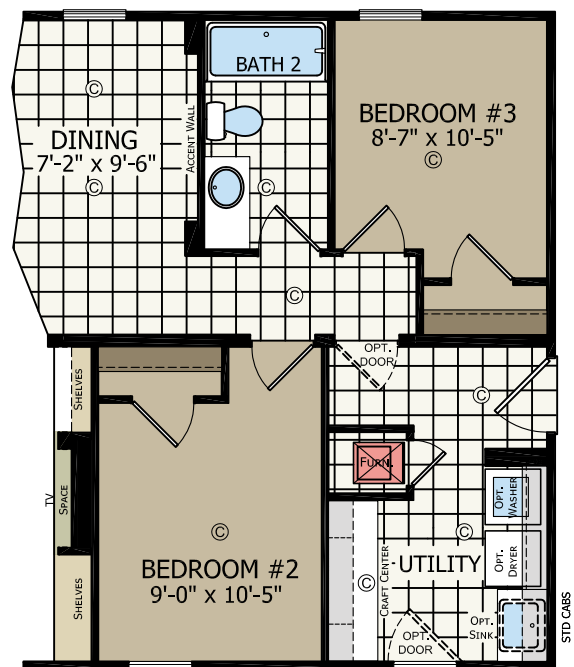
2856 237 | 3 bed-2 bath | 1386 sq.ft.



OPTIONAL MASTER BATH



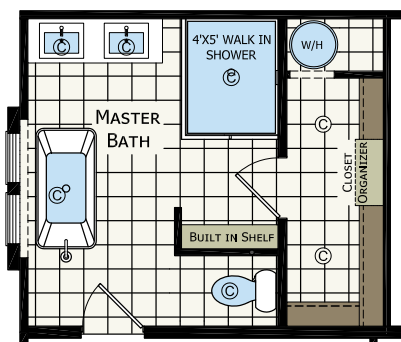
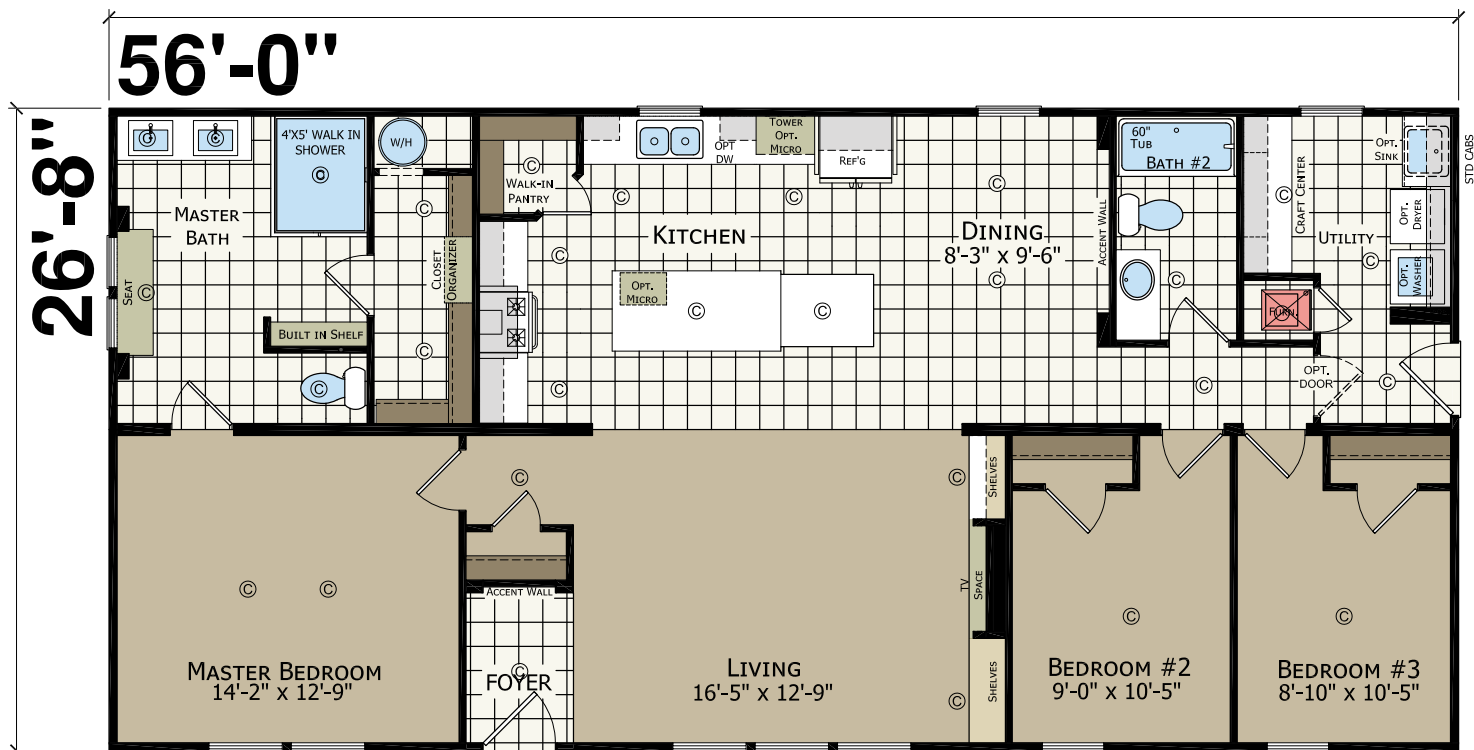
OPTIONAL UTILITY ROOM "B"



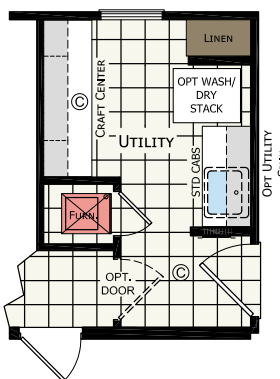
OPTIONAL FRONT ENTRY

# SUMMIT 56'

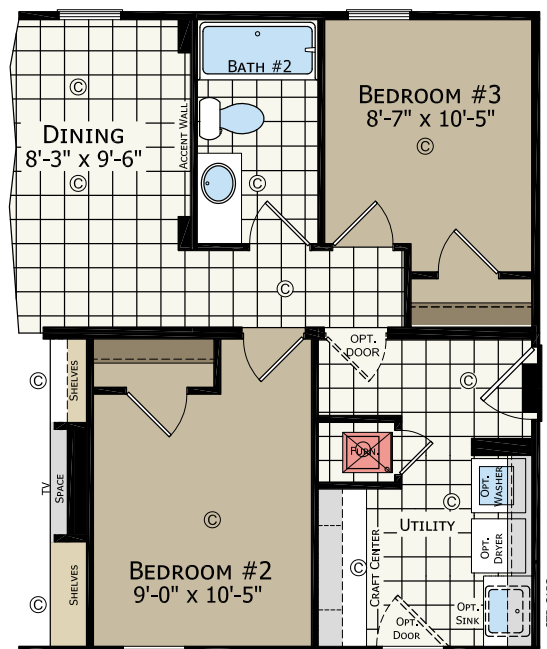
2860 237 | 3 bed-2 bath | 1493 sq.ft.



OPTIONAL MASTER BATH



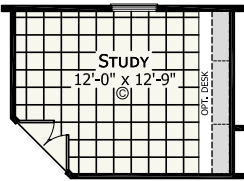
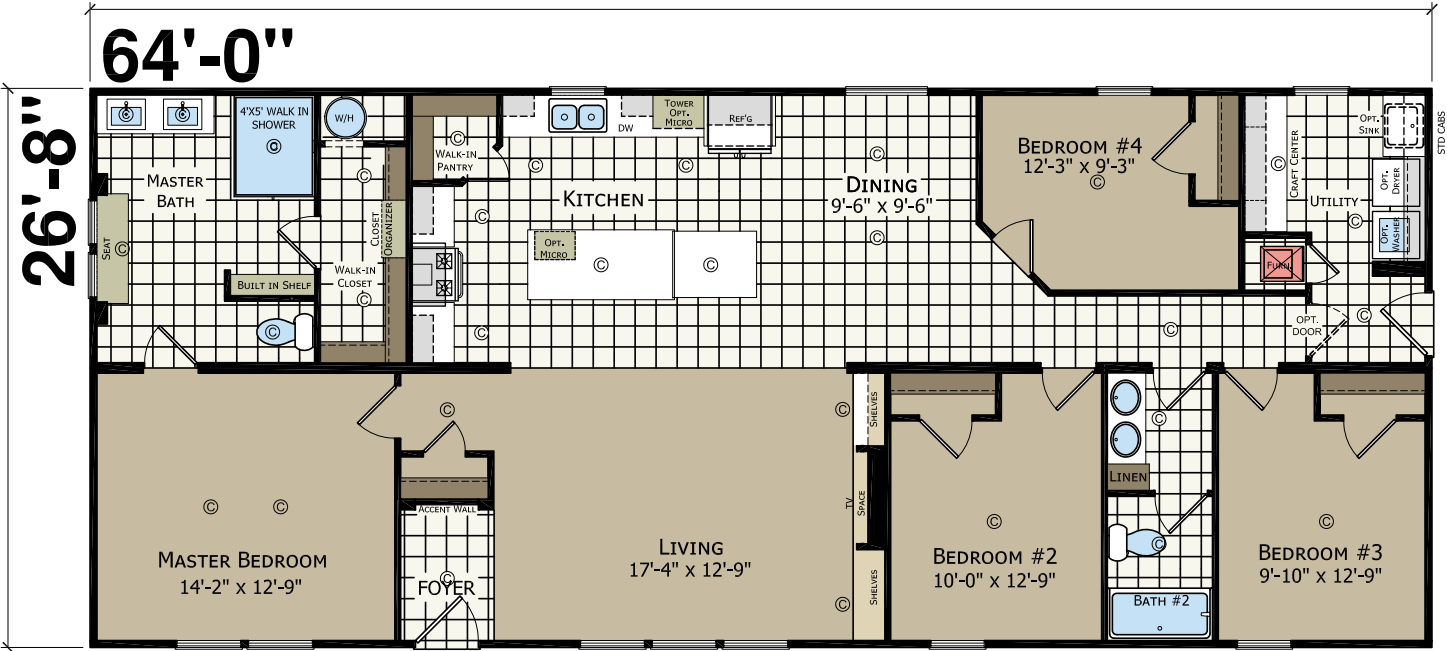
OPTIONAL UTILITY ROOM "B"



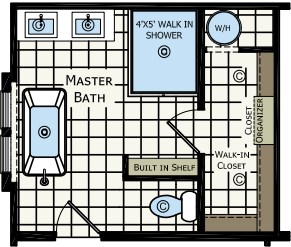
OPTIONAL FRONT ENTRY

# SUMMIT 64'

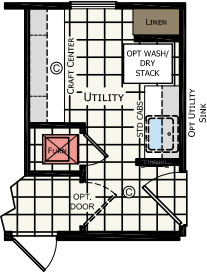
2868 237 | 4 bed-2 bath | 1706 sq.ft.



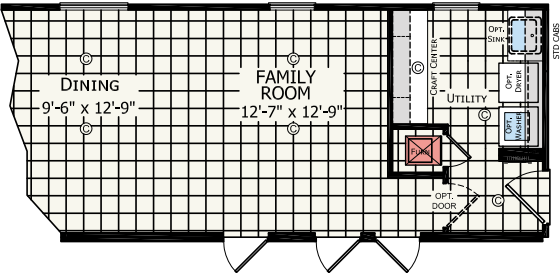
OPTIONAL STUDY



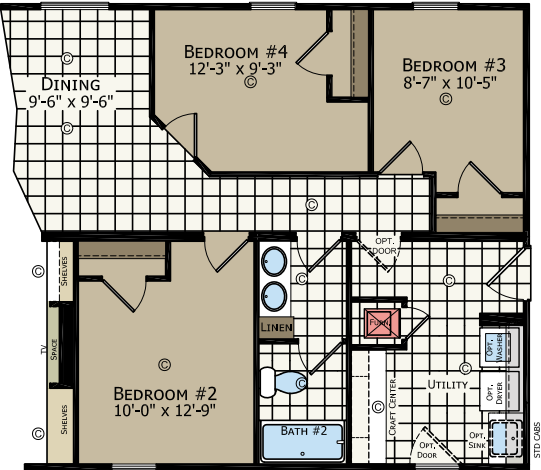
OPTIONAL MASTER BATH



OPTIONAL UTILITY ROOM "B"



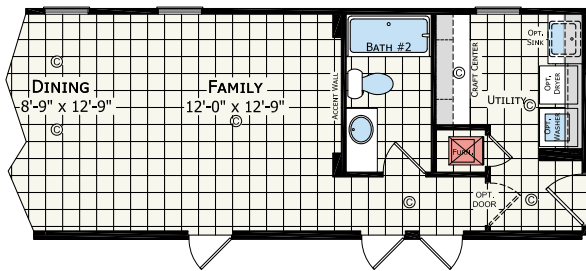
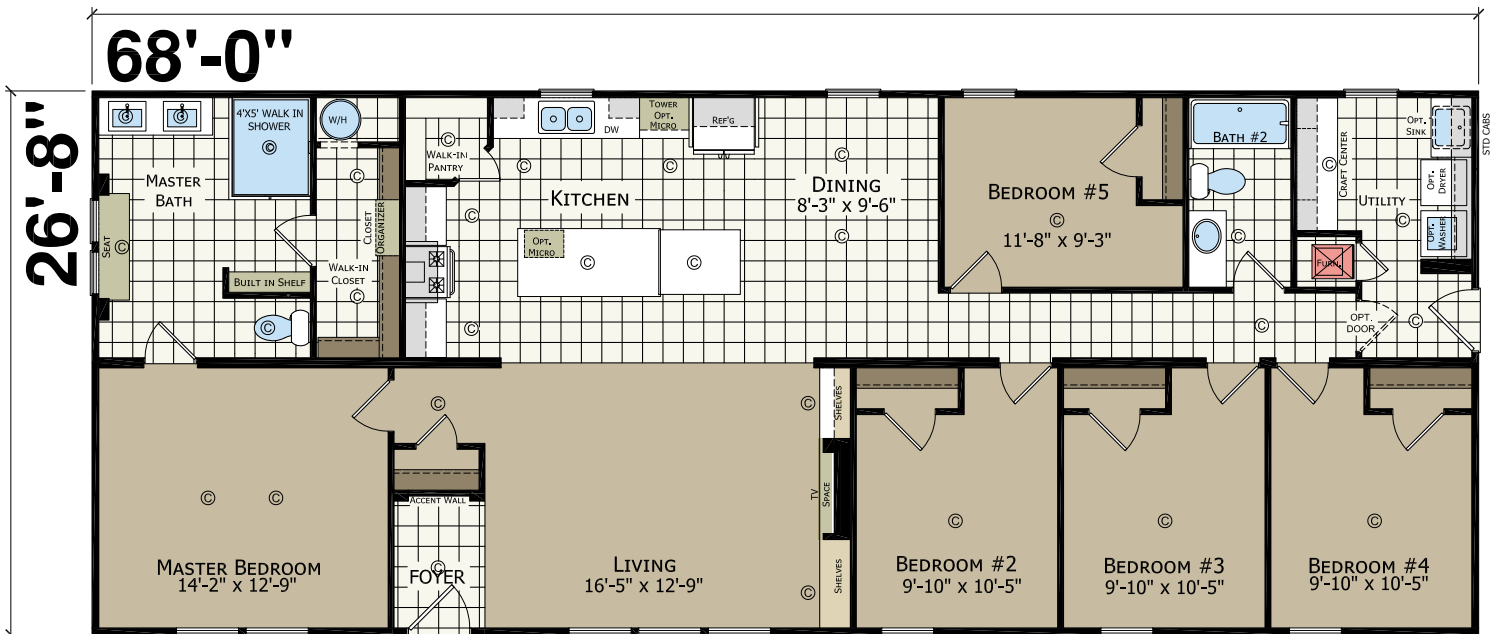
OPTIONAL FAMILY ROOM



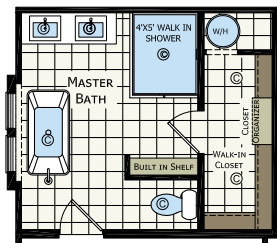
OPTIONAL FRONT ENTRY

# SUMMIT 68'

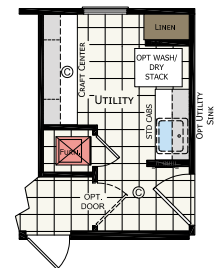
2872 237 | 5 bed-2 bath | 1813 sq.ft.



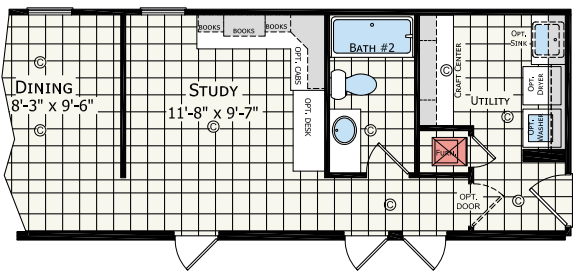
OPTIONAL FAMILY ROOM



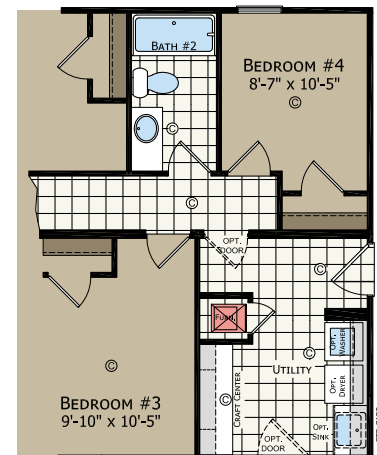
OPTIONAL MASTER BATH



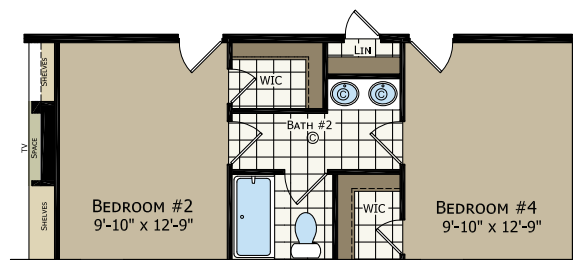
OPTIONAL UTILITY ROOM "B"



OPTIONAL STUDY



OPTIONAL FRONT ENTRY



OPTIONAL JACK/JILL BATH  
N/A W/ OPTIONAL FRONT ENTRY

# SUMMIT

## STANDARD FEATURES

### STRUCTURAL

Recessed Frame  
Detachable Hitch  
48" OC Outriggers  
2 x 4 Exterior Sidewalls - 16" OC  
(28') 2 x 6 Floor Joist - 16" OC  
(32') 2 x 8 Floor Joist - 16" OC  
R-11 Sidewall Insulation  
R-11 Floor Insulation with  
    Additional R-11 Outside Beams  
R-28 Roof Insulation  
5/8" OSB Decking T & G  
7/16" OSB Roof Sheathing  
30lb PSF Roof Load  
Elevation "A"  
    Gables, Lineals & Shake

### INTERIOR FINISH

Drywall Throughout  
Arena Carpet  
Tack Strip  
5Lb Rebond Carpet Pad  
Beauflor - Designers Choice  
Wire Shelving In Closets  
Smoke Alarms W / Battery Backup  
2 1/4" Door Casing - L/A  
3" White Base Moulding - L/A  
618 Flat All Else  
Finished Ceiling Joints - L/A  
Formica Countertops  
Self Edge Countertops  
Platinum Light Fixtures  
Entertainment Cnt - Per Print  
Recessed Electric Fireplace  
    w/ Ship Lap & Barn Door  
Ship Lap Accent At Entry

### EXTERIOR

8' Sidewalls  
Nominal 3/12 Roof Pitch  
25 Year Shingles  
House Wrap  
Dutch Lap 4" Vinyl Siding  
OSB Wrap  
White Vented Soffit  
Exterior Light - Rear Door

### KITCHEN / BATHROOMS

Black Ss Smoothtop Range  
Stnl Stl Euro Range Hood  
Black Ss Side By Side Refer  
Black Ss Dishwasher  
Black Ss Microwave  
    <=52' Boxbuilt In Island Only  
    >52' Box Built In Tower Or Island  
Hardwood Cabinets  
Hardwood Stiles  
6" Uk2 Style Handles T/O  
Center Shelves In Base Cabs  
Single Bank Of Drawers - Vbp  
Refer O/H - Open Shelves  
Luan Side Panels  
Quartz Countertop - Kit  
Formica Waterfall - Island  
Stnl Stl Undermount Sink  
    Single Lever Metal Faucet  
One Row Ceramic Backsplash - Kit  
Ceramic Tile Between Range & Hood  
Agile Panle Shower W/2 Sided Glass  
Rain Shower Head  
Furniture Style Lav w/Cultured Marbled C/T  
    Master Bath  
2 Rows Subway Tile In Mbath  
Furniture Style Lav W / Formica C/T  
    Hall Bath  
Euro Metal Faucets - Mbath  
(2) Led Lighted Mirrors - Mbath  
Round Commode  
China Lavs - Hall Baths  
Lighted Bath Fan

### WINDOWS & DOORS

6 Pnl Residential Frt Door  
6 Pnl Residential Rear Door  
Low E Single Hung Vinyl 6/6  
    Gridded (Sizes Vbp)  
2" Mini Blinds Throughout  
6 Panel White Interior Doors  
2-Mortised Hinges  
Nickel Round Knobs  
Furnace Door (Standard Wood)

### HEATING/PLUMBING/ELECTRIC

Electric Furnace  
Aluminum Heat Ducts  
In-Line Floor Registers  
200 Amp Service  
(1) Exterior Recept  
All Copper Wiring  
Plumb For Washer  
Wire For Electric Dryer  
Pex Water Lines  
30 Gallon Electric Water Heater  
Main Water Shut Off  
Frost Free Faucet (1)  
Led Can Lights T/O  
7 Can Lights In Kit W/Dimmer

VBP=Varies by plan

Note: Atrium Doors and Patio Door will no longer come standard with Grids

Due to continuous product development and improvement, prices, specifications, and materials are subject to change without notice or obligation. Square footage and other dimensions are approximate. Exterior images may be artist renderings and are not intended to be an accurate representation of the home. Renderings, photos and floor plans may be shown with optional features or third-party additions.



308 Sheridan Drive  
Topeka, IN 46571

[www.Redmanhomesofindiana.com](http://www.Redmanhomesofindiana.com)

CHAMPION®

MANUFACTURED BEAUTIFULLY™